

USB 2.0 TO RFID-PROXIMITY

USER GUIDE

MSSSED USB-RFID proximity

NEW

CE

USB 2.0 TO RFID-PROXIMITY

Product Features

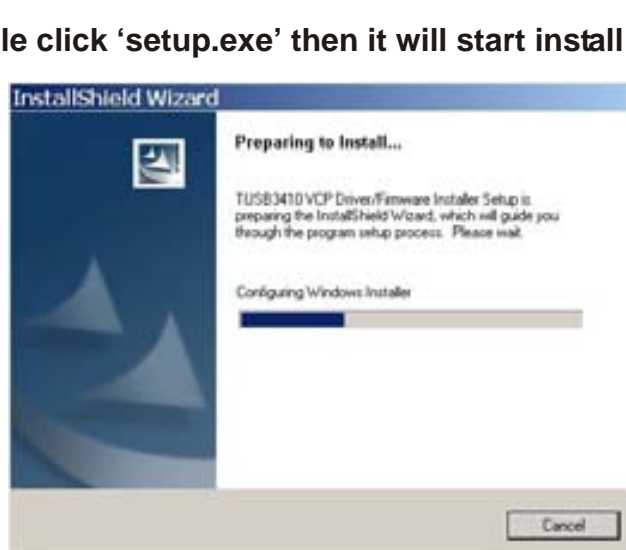
- USB Specification Rev. 2.0 compliant
- External or internal antenna
- Anti-collision function
- Multi-tag reader ISO-14443-A ISO 15693 (30mm distance from reader)
- Transmission Speeds 19200 Baud 8bit nparity 1Bit stop
- Scan mode preset , ASCII notation
- Conditions of operation 0- 70 °C UR 25-85 %
- Power +5V (USB line) 250mA

System Requirements

- IBM PC 486DX4-100 Mhz CPU or higher or compatible system
- Available USB port
- CD-ROM drive
- Windows 2000,XP,Vista

Driver Installation XP

1. During installation, please don't link USB-rs485 with your computer
2. Double click 'setup.exe' then it will start install





3. Click Next



4. Click Continue Anyway



5. Click Finish

6. Restart your computer

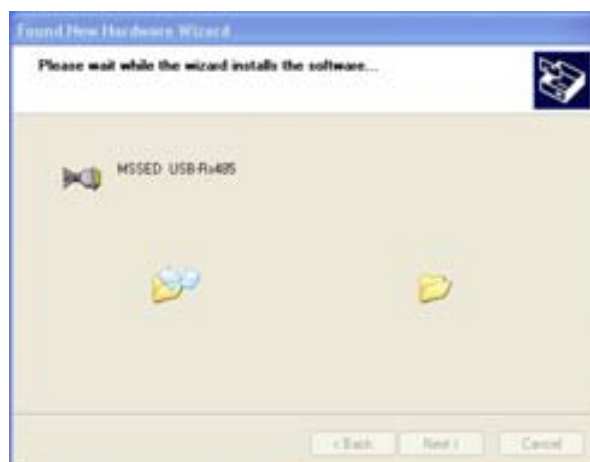
7. Devices USB-rs485 connection



1. Click Next



2. Click Next



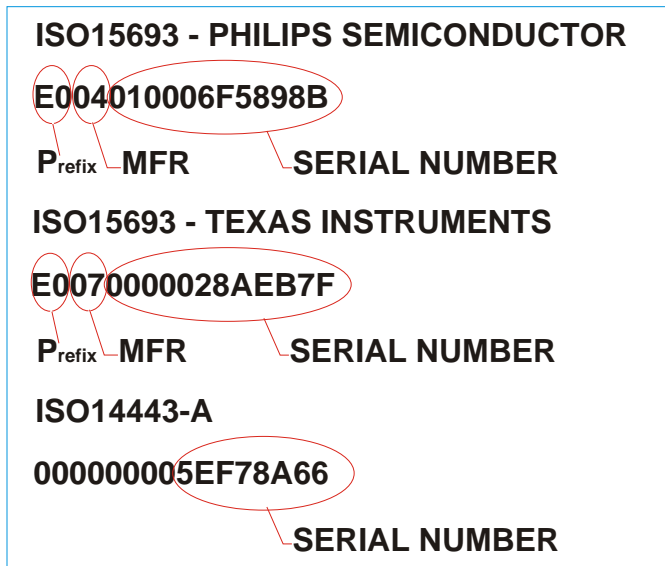


3. Click Continue Anyway



4. Click Finish

- Tag UID Unique identifier



- MFR code (ISO15693)

02H - ST MICROELECTRONICS
04H - PHILIPS SEMICONDUCTOR
05H - INFEON
07H - TEXAS INSTRUMENTS
16H - EM MICROELECTRONICS

- The UID is factory programmed and cannot be changed

- Scan-Mode

In this mode the reader automatically trasmit UID
to host computer .
ASCII notation

